

St Peter's Hartshorne

Hello everyone

It has now been six months since the start of the coronavirus lockdown and the latest estimates are that it will be another six months before many of our restrictions can be lifted. That may be a cause for concern for many of us but I want to share with you an image given to us in our Goseley Coffee and Conversation session.

The image was that of the Israelites as they wandered in the desert having left Egypt. They did not know exactly where they were going or how long it would take to get there. Many of them looked back to their time in Egypt, remembering the grain and the fruit they had to eat (Numbers 20:5) there but forgetting, maybe, the hardships and the slavery.

We, it seems, are in our own wilderness having left behind what was and travelling to what will be. Just as the Israelites had to fix their gaze onto the pillar of cloud and fire, we need to stop looking backwards and fix our eyes on Jesus, who goes before us and will lead us to our new land.

God Bless

Stella

Harvest



This Sunday is our Harvest festival and, so far, the weather is looking good enough for us to hold our service in the Church yard. We will be meeting at the side of the church, between the vestry door and the prayer tree.

If you are able to, please bring:

- **a camp chair** or picnic mat to sit on (we will have some chairs available for those without)
- **a coat or a blanket** as it may be cold.
- **a trowel** (gardening tool)... More will be revealed in the service.

Please remember that although we are outside, social distancing measures still apply and we will need to take names for test and trace purposes so please book in in advance and keep 2m from those outside your household.

After church coffee

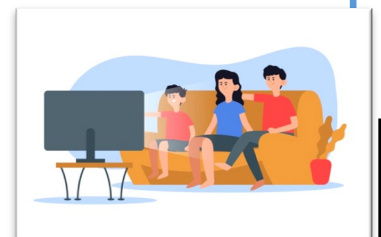
Our after-church coffee time is still ongoing, please join us at...

Sunday at 12:30am

Please join us on the link:

<https://us02web.zoom.us/j/87324356137?pwd=ckdVMTN6eS9GMjRveUMyMWwvT1ZVZz09>

Or by telephone on 0203 481 5240



Big Church Read



The Big Church Read
READ WITH US THIS SEPTEMBER

1. Watch the video
2. Read the chapter
3. Discuss with friends

thebigchurchread.co.uk

Some of us have signed up for the Big Church Read which started this week.

Groups are meeting on Wednesday and Thursday via Zoom. There is still time to get involved, contact Stella for details or check out the web page:

<https://thebigchurchread.co.uk/>

Pilgrim course

I am intending running another Pilgrim course over the next few weeks, possibly by zoom (as this will allow more attendees).

This will be Pilgrim part 1 – Turning to Christ. This looks at what we mean by the promises we make at Baptism. This is a good course for those new to the Christian Faith, but is also helpful to those of us who have know Jesus longer as a reminder of what we believe and why.

If you are interested in joining us, please let me know.



pilgrim

Explore the Christian faith with others and see how it can be lived out each day

Consider the heart of Christian belief through the six questions asked at baptism

Contact: 07802963817
greenwoodstella@yahoo.com

A COURSE FOR THE CHRISTIAN JOURNEY

CHURCH HOUSE PUBLISHING THE CHURCH OF ENGLAND www.pilgrimcourse.org @pilgrimcourse

Pumpkin Trail

For the last three years we have held a Light Party at Halloween, giving families a chance to have fun and learn about Jesus the Light of the World. Covid restrictions mean that we will not be able to host a party this year, however we would like to do something to highlight Jesus at this time.

One of the big draws of the light party was always the **pumpkin trail** from the hall to the church, so I am suggesting that we make a trail across the church yard ending in the church porch where families can pick up some information or a bag of hope containing information about Jesus, an activity sheet and some chocolate or similar.



This links in with the suggestion on the village Facebook page for people to carve pumpkins and place them outside their homes for children to see.

To do this we will need a number of people to carve pumpkins (nothing scary please) between 28th-30th October ready for the trail. Pumpkins can either left at Church or collected from your home (call me to arrange).

Please let me know if you can help.